



Relogic 105DW  
Relay Controller

In today's installation Relay race  
there is one clear winner!

RELOGIC  
Intelligent Relay

by AVLinkPro™



Extensible http based relay controller powered by the AVLinkPro technology. A truly intelligent control of devices and triggers with real-time feedback and management. An expandable system that can piggy back additional modules up to 128 total relays. Optically isolated to safely, control relays, control remote relays, count and even transfer serial data. Allows for local http and cloud based control. Optional Telephone Managed interactive voice response capable control.



Enhanced by the power of the AVLinkPro solution to this Bridge controller allowing Control, interaction and timing. Each A1601 relay module is Attached by daisy-chained RJ45 Connector to the controller Bus. (Maximum of 8 Modules)



#### Controller features

- Can control 2 to 128 individual relays
- Can manage ports as Bi-directional
- Load Type: General Purpose
- Wired to network
- Built in I2C port
- (Optional Wifi version)
- Input sensing up to 5V
- Optional POE Powered
- DIN Rail/Wall Mountable
- Daisy Chains to additional Relays or options
- SIP addressable with Ittendant Cloud Service

Supports  
Up to  
128 Relay  
Ports

RELOGIC  
Intelligent Relay

AVLINKPRO™

Enhance / Unify AV Communication Technology

**Build:** Solid state embedded system

**Mounting:** DIN Rail or wall mountable

**Dimensions:** 7.32" x 3.54" x 1.16"

**Power:** 5V DC

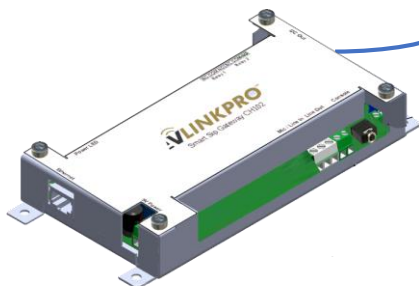
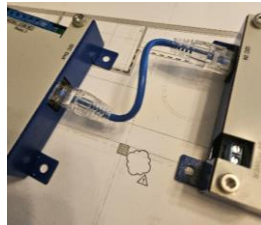
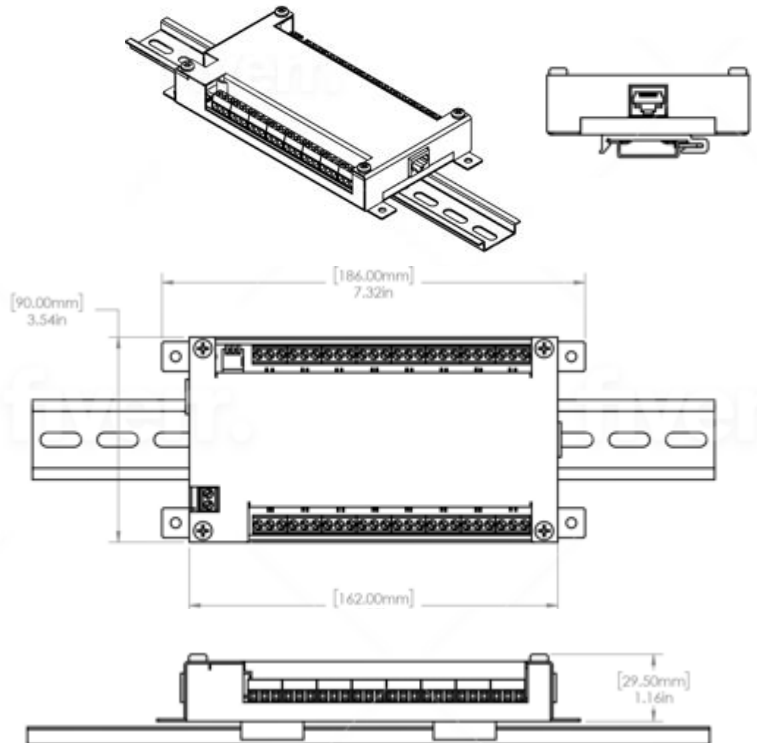
**Operating Temperature:** 32 - 104° F

**RJ45 I2C Bridge Port, Dry Contact Closure**

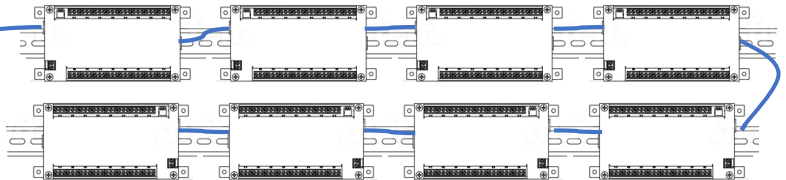
**Aluminum housing**

## Support for:

- Door Relay control
- Gate Control
- Elevator Control
- Lighting Control
- Alarm trigger control
- Switch control
- Sprinkler Control
- Shade Control
- Interactive control



Next Gen CH-102  
DIN Ready Control Option



**RELOGIC**  
Intelligent Relay

**AVLINKPRO™**  
Enhance / Unify AV Communication Technology



Relogic A1601



**A truly intelligent control solution that manages devices and triggers with real-time feedback and management. An expandable system that can add additional modules up to 128 total relays. Optically isolated and input sensing to monitor state, control relays, control remote relays, count and even transfer serial data.**

Enhanced by the power of the AVLinkPro CH-100 SIP Bridge controller allowing Control, interaction and timing. Each A1601 relay module is Attached by daisy-chain RJ45 Connector to the AVLinkPro Bus. (Maximum of 8 Modules)

#### Relay Contacts

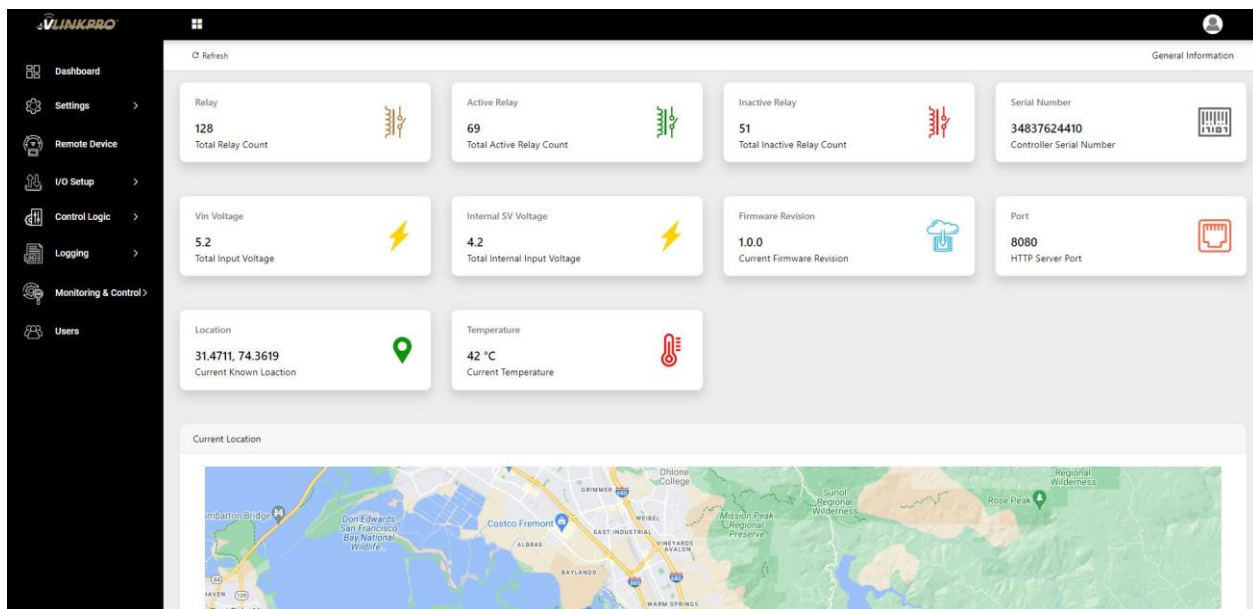
- Number of Relays: 16
- All ports Bi-directional, individually assigned
- Load Type: General Purpose
- Electrical Life: 100K operations (Min)
- Mechanical Life: 5M cycles (Min)
- Relay Modes: ON/OFF or Pulsed
- Input sensing up to 5V
- Optically-Isolated relay ports
- Minimum Hold Time: 20ms
- Led indicators for enabled ports



**RELOGIC**  
Intelligent Relay

**AVLINKPRO™**  
Enhance / Unify AV Communication Technology

## Secure, Logical Browser Based Control



## Easy configurable menu system

## Features:

- Network configuration
- Email notifications
- Configuration backup/Restore
- Relay configuration
- Timers
- Schedules
- Automation
- Logging

